

90TYD Low Speed PM AC Synchronous Motor



Single-phase



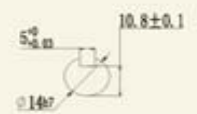
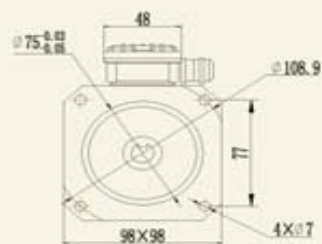
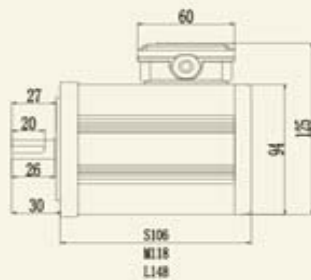
TYPE	Rated Torque N.m	Frequency Hz	Voltage V	Current A	Synchronous Speed rpm	Capacitor μF/V	Resistance Ω/W	Inertial Load Kg/c ²	Bearing Force		Weight kg					
									AD N	Radial N						
90TYD-ACR60	S	2.7	50	100	0.5	60	7.5/250	220/60	9	75	220	2.45				
			60	110		72										
			50	220		60										
	M	4.8	60	240	72	1.8/400	1000/60									
			50	100	60											
			60	110	72											
90TYD-ACR115	S	1.5	50	100	0.48	115.4	7/250	280/60	4	75	220	2.4				
			60	110		138.5										
			50	220		115.4										
	M	3.0	60	240	138.5	1.5/400	1250/60									
			50	100	115.4											
			60	110	138.5											
L	4.5	50	220	0.4	115.4	3.0/400	680/80	7	70	200	3.8					
		60	240	138.5												
		50	100	1.2	115.4											
	L	4.5	60	110	0.55	138.5	4.5/400					480/120	10	65	180	5
			50	220	115.4											
			60	240	138.5											

Three-Phase

TYPE	Rated Torque N.m	Frequency Hz	Rated Current A				Synchronous Speed rpm	Inertial Load Kg/c ²	Bearing Force		Weight kg					
			200V	220V	380V	415V			AD N	Radial N						
90TYD-S60	S	3.2	50	0.235	0.215	0.125	0.115	60	12	75	220	2.6				
			60	0.22	0.2	0.12	0.11						72			
			50	200V	220V	380V	415V						60			
	M	6.0	60	0.4	0.37	0.215	0.2	20						70	200	3.8
			60	220V	240V	440V	480V									
			50	200V	220V	380V	415V						60			
L	9.0	60	0.59	0.535	0.31	0.28	28	65	180	5.2						
		60	220V	240V	440V	480V										
		50	200V	220V	380V	415V					115.4					
90TYD-S115	M	4.0	60	0.37	0.34	0.2	0.18					9	70	200	3.8	
			60	220V	240V	440V	480V									
			50	200V	220V	380V	415V				138.5					
	L	6.0	60	0.57	0.52	0.3	0.28	13	65	180		5.2				
			60	220V	240V	440V	480V									
			50	200V	220V	380V	415V				214.3					
90TYD-S214	M	2.8	60	0.5	0.46	0.27	0.25	6					70	200	3.8	
			60	220V	240V	440V	480V									
			50	200V	220V	380V	415V				214.3					
	L	4.2	60	0.75	0.68	0.4	0.37	9	65	180		5.2				
			60	220V	240V	440V	480V									
			50	200V	220V	380V	415V				257					
60	220V	240V	440V	480V												

Mounting Dimension

(unit: mm)



All data is subject to confirmation by BROOK-MTL

BROOK-MTL, 63 Allens Road, East Tamaki, Auckland, New Zealand

Tel +64 9 271 6063 - Fax +64 9 271 6020 - www.brookmtl.co.nz - info@brookmtl.co.nz

Associate companies: Rotating Machinery Supplies, 6 Devon Road, Hamilton rotatingmachinery@clear.net.nz

Soco Electric Motors, 473 Tremaine Ave, Palmerston North sales@soco.co.nz

E&OE